



**Spring / Summer 2017**

## **Four Seasons Turf Reporter**

### **Toro Golf Irrigation Service Training**



In late March, Toro Golf Irrigation customers were offered training on Toro Sprinkler and Control System maintenance and troubleshooting. Classes were held in Albany, Rochester and Buffalo. Instructors included Dave Knox and Nick MacArthur from Grassland and Mick Jones and John Fuller from the Toro Company.

Participants learned how to service Toro golf sprinklers as well as Toro GDC and Satellite Systems and were given an overview of the Toro Lynx Central Software.

Proper winterization and startup procedures were also covered. Thanks to all who participated in this training event.



### **Current New York State Contract**



**Heavy Equipment Now to April 10, 2018**

**The Toro Company has been awarded Contract # PC66756**

**Heavy Equipment (National Joint Powers Alliance and the Cooperative Purchasing Network Contract Piggybacks) Statewide**

**Group: 40625, Award: PGB22792**

**This LOT includes all Toro Mowing Equipment, Turf Utility Vehicles, Golf & Non-Golf Irrigation, Aeration Equipment, Zero Turn Mowers, Snow Throwers, Site Works Systems and accessories and options listed in Toro's Current Price List**

### **Toro Siteworks System Goes to Work on Rotary Service Project**

Grassland is a big supporter of Rotary and often provides equipment to aide in completing community service projects.

On May 5th, Kirk Pogge, President of Grassland and a member of Colonie-Guilderland Rotary and Chris Pogge, Commercial Sales Representative, helped with a Rotary service project at the Queensbury Land Conservancy. The work included installing 36 PVC bollards, filling with 80# bags of concrete mix and building a 60' wide walkway over wetlands. The work was part of a day of service which included many projects in the Lake George and Queensbury area.



**Count on it.**



## Toro Multi Pro Sprayer Updates



GEOLINK™

We are pleased to announce several exciting updates to the Multi Pro Sprayers for 2017!

### **GeoLink™**

A system for the Multi Pro 1750 – available early 2017– will be compatible with 2015 and newer models.

A variety of support materials are now available on the Sales Tool:

### **Why GeoLink™**

- Professionals want this technology. GPS has become commonplace and will continue to proliferate throughout our industry. Customers see the benefits that GeoLink can offer:
- Money savings – on average, our tests show a 14% reduction in chemical usage.
- Precision / accuracy – spray only where it's needed, eliminate gaps and overlaps.
- Operator skill – even an inexperienced operator can deliver consistent, high-quality applications.



### **ExcelsaRate™**

- Several enhancements have been made to the ExcelsaRate rate controller for F17:
- Three-boom, two-boom, and one-boom flow meter calibration process.
- TEC-controlled timed catch test for each nozzle size/color.
- Spray system pressure is now visible on the catch test screen.
- More precise manual pump speed control.
- Improved stability of displayed spray system pressure value.
- Improved accuracy of the flow meter calibration process.

### **Multi Pro 5800-G**

- An increasing number of customers prefer to use a rate controller which
- has resulted in a significant decline in the number of manual sprayers sold.
- Model 41594, the base model Multi Pro 5800-G has been discontinued. Going forward, only the 41394 with ExcelsaRate standard will be available.
- If a customer wishes to use the sprayer manually, that is, spraying in a speed-and-pressure methodology, they will simply “switch off” the ExcelsaRate controller function.
- GeoLink is compatible with model 41394. Once installed, GeoLink serves as the rate controller and essentially overrides the ExcelsaRate controller.



### **Pump Updates**

The pump used on all three sprayer models is changing in 2017. Here are the highlights of the changes:

- Improved diaphragm lifetime.
- Improved water flow in diaphragm cover to reduce pressure drop.
- Remote greasing – two non-rotating grease points.
- New cast conrod support ring (internal) for improved mechanical lifetime.
- Visually, the physical difference will be minimal.

### **Nozzle Selection App**

An all-new Web-based app has been developed to accommodate the nozzle selection chart.

- The user selects application mode (systemic or contact) and indicates the importance of drift control.
- They will then enter application rate and ground speed.
- Based on the selections entered, the app will recommend the two best nozzles for the application, and also suggest which suction filter(s) are the best match, plus a tip strainer.
- Once the user receives the nozzle recommendation, they are able to email the output results to whomever they choose.

# Golf Irrigation News

## Toro INFINITY™ Series Golf Sprinklers - Now included in our Buy 4 get 1 free promotion

Innovative SMART ACCESS™ design allows installation of future technology without digging

The INFINITY Series is the latest evolution of the company's market-leading 800S and DT Series sprinklers, which provide precise irrigation where it's needed without wasting water.

Forget the shovel and potential damage to the turf as all components are accessible from the top, making these new sprinklers not only easy to service but also saving on labor time.

"This innovative feature saves time and labor," said one golf course superintendent when attending a recent Toro Pro Club event. "Hands down you can quantify it. If other technology comes in the future, it's an added benefit. You have immediate savings."

You will be amazed at how the SMART ACCESS™ feature truly simplifies your operation. The patented cover design is easy to remove and provides top accessibility to all critical components, including:

- The patent-pending pilot valve with Toro's patented CHECK FLOW™ system to facilitate troubleshooting, pressure adjustments and servicing without turning the water off or digging.
- The GDC 2-wire module.
- And, wire splices are now protected from the soil and potential shorts to ground.

The INFINITY Series is loaded with all the existing efficiency and performance of the 800S and DT Series sprinklers, and enhances operation by offering top access capability. It is really the beginning of a journey; a new platform that has built in flexibility to integrate future upgrades virtually eliminating the obsolescence risk.

Additionally, Toro's INFINITY Series lets you create golf course brand awareness by showing your logo on the external cover. A touch of elegance and branding for owners and members.



## New Toro Greens-Pro®

Toro is pleased to announce availability of the new GreensPro 1260 greens roller, which represents several enhancements that are certain to impress your customers. We are sold out of the GreensPro 1240, model 44912, so all new orders should be placed against model 44913.

Key product features and customer benefits for the new GreensPro 1260 are summarized below:

GreensPro 1240



GreensPro 1260



The GreensPro 1260 is in a league of its own, delivering exceptionally smooth and fast greens with a superior operator platform. The split, overlapping, contour-following smoothing rollers perfectly follow undulations delivering exceptionally smooth putting surfaces. The operator platform is fully adjustable for unmatched comfort and operator safety. The transport system featuring a QuickLatch coupler makes transporting from green to green unbelievably quick and simple. Direct hydraulic motor drive for ease of operation and reduced maintenance. Exceptional greens rolling and ultimate useability. That's the GreensPro 1260.





## New Upgrade Available for OSMAC Control Systems

The Toro Company announces the addition of the OSMAC® G3 to its trusted field controller line for golf course irrigation. Available as a complete satellite or as an upgrade to existing E-OSMAC satellites, the OSMAC G3 offers new intuitive faceplate capabilities, improved performance and an enhanced level of control. The OSMAC G3 offers a simple user interface that can carry out both scheduled irrigation and multi-manual activities. The unit also delivers superior diagnostics, which provide superintendents with easy-to-interpret data. It also is equipped with Received Signal Strength Indicators (RSSI) to measure signal strength, which helps the overall performance of the OSMAC G3 unit.

Regardless of whether the OSMAC G3 is installed as a complete satellite or a retrofit faceplate for existing satellites, setup is simple. The retrofit kit can be installed in a matter of minutes and includes the OSMAC G3 faceplate, interface board, cables and hardware. "We're thrilled to now offer the enhanced OSMAC G3 field controller as both a complete satellite or as an upgrade option for one of our largest installed platforms — OSMAC," says John Fuller, senior product manager at Toro. "Golf course managers are now able to interface directly with the controller functionality out in the field, which will make a positive impact to overall golf course productivity."



### Turbine Drive Traveling Sprinklers

The MR43 is one of our most popular machines and meets a variety of irrigation needs including single pass coverage on football fields, large riding arenas, small acreage irrigation, and much more! Built with a three wheel chassis design and integrated stabilizer hitch, the MR43 has a flow range from 15 to 60 gallons per minute and a 393 feet hose length. The MR43 can effectively water up to 1.5 acres in a single pull! The ability to add the reliable on board Honda boost pump kit with auxiliary large capacity fuel tank for longer run times, can greatly enhance performance in low-pressure situations.



#### STANDARD FEATURES:

- Three Wheel Chassis Design for Easy Towing
- Turbine Operated
- Automatic Retraction & Shutdown
- Speed Control for Desired Application Rates
- Pressure Gauge to Determine Inlet Pressure
- Supply Hose (2" x 20')
- Scrolled Level-Wind to Facilitate Correct Tube Wrapping
- Tube Mis-Wrap Safety
- Two Wheel, Galvanized Sprinkler Cart w/ Part Circle Sprinkler

#### OPTIONS:

- 5.5 HP Boost Pump Kit, Pull or Electric Start
- 5.5 HP Supply Pump Kit, Pull Start
- High Cart for Clearance in Taller Crops
- High Speed Gearing for Arena or Artificial Turf Applications



## Toro Sprinkler Head Specials

**Buy 4 - Toro FLEX800, *Infinity*, or B Series Sprinklers at our already discounted prices and Get 1 Free - No Limit**



The **Flex800** is Toro's dual trajectory series. With many innovative features, its selectable trajectory provides a 15 or 25 degree setting with a simple turn of the main nozzle. It also offers a removable rock screen and stainless-steel valve seat. Available in 1" or 1.5" models as a Full Circle or combination Part Circle / Full Circle, and in NPT or ACME

The **INFINITY** Series is the latest evolution of the company's market-leading Flex Series sprinklers. Forget the shovel and potential damage to the turf as all components are accessible from the top, making these new sprinklers not only easy to service but also saving on labor time.



The **B Series** Golf sprinkler family brings you all the great features and performance of the FLEX800 Series sprinklers in a more economical body package specifically designed **for block systems**.

**\* Promotion Ends 10/14/2017. Buy 4 get 1 free price on bodies only applies if equal number of Conversion Assemblies are purchased with the bodies on the same order.**

**Buy 4 - FLEX or Infinity series Conversion Assemblies and Get 1 Free - No Limit**

Conversion assemblies allow you to upgrade to Toro's latest features without having to purchase new heads. Simply replace the internal without digging and you're done.

**Promotion Ends 10/14/2017**



**36 Month 0% Interest Financing Now Available on all Toro Golf Irrigation Products**

Grassland can help you design and specify an irrigation system for most any Non-Golf application including; Commercial Buildings, Parks, Athletic Fields, Estates and more. We have a wide variety of products and services to meet your needs and would be happy to speak with you about your project, help with design and specifications and recommend a great contractor. Contact Jon Van Dyke at 518-785-5841 ext. 5121

Sprinklers - Valves - Controllers - Drip Irrigation - Low Volume Products

**TORO**

**Irritrol**  
Get more done™

**RAIN BIRD**



PVC Pipe



Pump Stations  
and Boosters



Wire and  
Accessories



Fittings, Tools &  
Accessories



Landscape  
Lighting



Valve Boxes  
& Valves



Drainage  
Products





Eric and Fred from Harvest Hill strike a pose on their new RM 3555 and one of their new Greensmaster 3120's



Bruce and Amy on their new pre owned Toro Reelmaster 5510 fairway mower at Kingsboro Golf Club in Gloversville NY



Charlie Wallace and Mark Donato from the City of Albany DGS with new Groundsmaster 3280

## New Toro Reelmaster® 5010-H Hybrid Fairway Mower



The Toro Company is pleased to announce the addition of the Reelmaster® 5010-H hybrid fairway mower to Toro's trusted commercial mower lineup. The Reelmaster 5010-H is the industry's first and only fairway mower with a true hybrid drive system. Toro's exclusive PowerMatch™ Technology seamlessly delivers the power you need – when and where you need it – for flawless fairway playing conditions. In fact, the Reelmaster 5010-H can deliver over 40 horsepower on-demand for climbing steep hills, verticutting, scalping or to support other peak load situations.

In today's competitive marketplace, you shouldn't have to sacrifice mowing power to realize true efficiency and labor savings. Three years of real-world field testing have proven not only that the Reelmaster 5010-H has the power to perform in the most rigorous golf course conditions, but it also saves significant time and money. In short, the Reelmaster 5010-H fairway mower is a true "game-changer".

Through the integration of the PowerMatch™ system, the unit couples a 24.8 hp Tier 4 compliant Kubota® diesel engine with an inline motor generator and a self-charging 48-volt battery pack to provide consistent, productive and efficient traction and cutting performance. The new Reelmaster 5010-H boasts average fuel savings of 20 percent when compared to other conventional fairway mowers and significantly more fuel savings when operated in the economy mode.

The move from hydraulic to electric cutting units has also resulted in other key customer benefits. First, the electric motors provide more precise control of both reel speed and clip rates, which translate into a more consistent cut quality and improved playability. Secondly, end users experience reduced maintenance downtime due to the elimination of the hydraulic components commonly associated with traditional cutting units. Over 100 potential leak points have been removed from the cutting system as a result of the move to all-electric cutting unit motors.

The new Reelmaster 5010-H also features Plug 'n' Mow technology, which allows it to accept 5-inch (12.7 cm) or 7-inch (17.7 cm) diameter Dual Point Adjustment (DPA) cutting units in 8 or 11 blade configurations. Simply plug in the applicable cutting unit reel motors and the machine automatically makes the necessary adjustments — another time-saver and yet another way to provide the cut quality you desire for any conditions.



Left - C.J. Gallup (left ) with Parks crew at Tawasentha Park with new Groundsmaster 3280

Right - C.J. Gallup Supt. And David Jenkins Assist. At Western Turnpike Golf Course with new Greensmaster 3150Q





# Parts & Service News

## Toro Loyalty Credits

Commercial Customers, concerned about budgets? The new TLC program can help. Each time you buy from qualifying Parts categories you keep your equipment running in top condition AND you receive TLC points. Buy Parts, Earn Credit – it's simple. Points may be used for future parts purchases, product training, or myTurf subscriptions and hardware.

Enroll in this FREE program today! Once enrolled, monthly emails will be sent out to notify you on your progress as well as to update you on new Commercial Parts information. If you are a current TLC customer and have redeemed your points within the past two years, you have automatically been enrolled in the new program!

**Enroll your business today!**



**TLC**  
Toro Loyalty Credits  
PARTS REWARDS PROGRAM



## Grassland Recognizes Harvey Alois

Grassland recognizes Harvey Alois; age 92, who recently retired after being a Toro Dealer for 62 years.

Harvey's small operation has been a landmark on Troy Schenectady Rd. in Niskayuna for many decades.

Harvey, always a classy guy and sharp dresser, made frequent visits to our Latham location to pick up parts and is well known by our entire staff.

We thank Harvey for his loyalty to Toro and wish him well in all his future endeavors



Two sheep and a goat check out a Toro Workman after a recent demo in Vermont. Maybe they were just looking for a ride somewhere



Alden Maddock, Superintendent & Joe Bushee, Equipment Manager at Ekwanok CC with a new Foley AccuMaster 653 Grinder



Boogie from the Country Club of Buffalo gives their new Toro HDX a thumbs up



The crew at Spa Golf aka Professional Golf Services with two new Greensmaster 3320's and True Surface Greens Grooming Brush.



Tim Stanwood, Superintendent takes delivery of 2 Toro Greensmaster 3300 TriFlex Greens mowers



Vermont Air National Guard Base in Burlington, VT receiving a Proforce Blower with D.O.T approved trailer.

## NEW Toro SMARTHUB™

Changing how you think about Two-Wire Systems



### LYNX Smart Hub

Optional Lynx Smart Hub combines the simplicity of a 2-wire system with the added security of a traditional satellite system

- ✓ Irrigation system can be segmented into manageable areas for simplified maintenance
- ✓ Provides for in-field manual operation or troubleshooting
- ✓ Stores and runs a fully flow-managed irrigation schedule in the event the central computer is offline
- ✓ Creates a convenient point of connection for soil, flow and status sensors



The innovative and convenient Lynx® Smart Hub is part of the Lynx GDC 2-wire control system. The Lynx Smart Hub is a new type of field controller that adds security, programmability and sensing to the benefits and simplicity of a two-wire system to optimize golf course irrigation operations.

This adaptable field controller has flexible installation options that include a local or remote pedestal or wall mount and wireless or optional wired two-way communication. The communication system has a range of up to two miles, allowing for road crossings and phased irrigation projects, and provides a simple way to distribute intelligence as a controller for multiple golf holes.

Two-wire technology enables operators to control up to 1,000 sprinklers per hub and 250 sprinklers per wire path. The Lynx Smart Hub stores and runs a fully flowmanaged irrigation schedule, while creating a point of connection for soil, flow and status sensors.

Maintenance and troubleshooting are simplified due to the dispersion of holes within the two-wire system. This enables localized fault analysis that does not interfere with other holes. The Lynx Smart Hub can also be fitted with a repeater for use with Turf Guard® wireless soil sensors.



Rob Bombard, Head Groundsman at Jamesville Dewitts Schools, takes delivery of a new GM5900



Hickory Hills Superintendent Chad Kressler taking delivery of a Pre-owned Toro RM5400



Owner Mike Scaringe and Dave of Skyview Landscaping taking delivery of their new Fleet of Toro Grandstands





**The Workman® GTX** is a grounds and turf crossover vehicle that boasts an unequalled combination of comfort, utility and control, making it simply superior to the competition. Its increased power, improved steering and exclusive suspension and braking systems make the Workman GTX the most versatile, practical and comfortable utility vehicle in its class.

Available in gas or electric, the Workman GTX features hundreds of configuration options; including front and rear attachments, a flat bed and a four-seat option. So whether you are setting cups, checking on irrigation, working around campus, or moving people or materials, the Workman GTX has the power and versatility to get the job done right.



- **Power**– Whether you choose the 429 cc gasoline or 48 volt A/C electric Workman GTX, power and performance come standard. An improved power to weight ratio boosts payload capacity and productivity by allowing you to do more, every day!
- **Steering** – An automotive-grade rack and pinion steering system provides more control and lowers steering effort, while operating loaded or empty. This allows operators to focus on the task at hand and nothing else.
- **Suspension** – Coil-over shocks all around the vehicle deliver greater suspension travel and adjustability resulting in a smoother ride and minimized operator fatigue.
- **Versatility** – The Workman GTX is adaptable for any task. Two or four-seat configurations come with bench or bucket seats. Front and rear attachment points for garbage cans, hose reels or walk spreaders free up the bed for more hauling capacity. 4 and 6-foot flat beds are also available.
- **Hydraulic Disk Brakes** – Minimal maintenance, no cable adjustment and less pedal force than mechanical cable brakes affords the Workman GTX reliable and consistent stopping power.
- **Durability** – Virtually unbreakable composite exterior components and a powder coated frame and underbody give the Workman GTX superior durability. Run it hard, day after day.



#### **Workman GTX Beverage Cart Now Available**

Toro is excited to announce a new partnership for beverage carts through Fairway Café, effective immediately. A beverage cart is currently available for the Workman GTX, and will soon be available for the Workman MDX.

The beverage cart is made from gel-coated fiberglass and aluminum, and does not require any modifications to mount to the chassis. The unit features:

- Lockable and insulated cold storage with drains
- Locking dry good doors
- Locking confectionery drawer
- Cup dispensers
- Bottle opener
- Weather-sealed doors
- GTX version holds over 500 twelve-ounce cans
- MDX version holds over 850 twelve-ounce cans





Geneva City Parks crew with their new Toro Zmaster



Leo Rousseau Technician, Chad Murphy Assistant, Rotor Course Dog and Randy Hoffman Supt. at Spa Golf aka Professional Golf Services with new Reelmaster 5410



Leo Rousseau Technician, Course dog, Rotor, and Randy Hoffman Supt at Spa Golf aka Professional Golf Services with new HDX Workman



Marc Prosser from Albany Country Club with their 2 new Toro GM4000-D's



Mike Cunningham (L) and crew with their second Toro Groundsmaster 360 with 100 inch deck and debris blower



Neil Cary (r) Niskayuna Central Schools with HDX Workman 4WD with Rahn Infield Groomer



Scott Gallup Supt. at Capital Hills with new 4WD Toro Workman



Logan from Lockport Town Country is happy mowing with a new Toro Greensmaster 3320



Rush Henrietta Schools on their new Toro Sand Pro



Paul Deere at Empire State Plaza with two new Groundsmaster 7200 mowers with baggers



Dan Whiteley and Justin from Arlington CSD checking out their new Toro 3040 Sand Pro



JoAnne Kos (L) and Jack Holstein (R) at RPI with their new Toro GTX Workman



## Groundsmaster 360 with the 100-inch cutting deck



Count on it.

The Toro Company announces the availability of a brand-new 100-inch cutting deck as an option for the widely popular Groundsmaster® 360 mower models. Launched in 2010, the Toro Groundsmaster 360 maximizes productivity by combining the agility of a zero-turn riding mower with the flexibility of an out-front rotary mower.

Using Quad Steer™ all-wheel steering, with the added control of a steering wheel, the Groundsmaster 360 offers unprecedented maneuverability and versatility unlike any other rotary mower. Designed with large-area mowing in mind, the



**Groundsmaster 360 with the 100-inch cutting deck provides** a versatile solution for both wide-area mowing and trimming in one machine. "This new deck size for the already reliable and efficient Groundsmaster 360 will be an exciting addition to any fleet," explains Kevin Conry, Senior Marketing Manager for Groundsmaster rotaries.

The three-section deck incorporates two side wing decks that articulate up and down, up to 15 degrees, to follow contours of the terrain, making quick work of any mowing job. The wing decks raise for transport, allowing the mower to fit easily onto trailers. The center deck is 51 inches wide with each wing deck 25 inches wide.

Powered by a 36 hp Kubota® 1505 4-cylinder diesel engine,

the Groundsmaster 360 comes in either 2WD or 4WD models to go places (subject to slope limitations) inaccessible to most other large-area riding mowers. "The 100-inch cutting deck will simply save crews time and money," says Conry. "In addition to this new deck, Toro also offers a Pro Force™ debris blower and several different snow removal attachments that mount to the front of the machine with Toro's patented Quick Attach System™, giving an unprecedented level of versatility and year-round functionality to the Groundsmaster 360."



Groundsmaster® 360 Quad-Steer™  
4WD with Safety Cab & 72" Deck

## Groundsmaster 360 Quad-Steer Accessories

### Removable Winter Enclosure 31220

- Removable, weather-tight heated enclosure mounts to the existing ROPS structure. Fits Groundsmaster 360 4WD non-cab models only. Includes worklights and amber/red flashers.



### Utility Flail Mower MiniMax - Model FM60

- Uses front QAS (30509) & PTO hookup
- 60" (152.4 cm) cutting width
- Weight 480 lbs. (217.7 kg) max
- ANSI Compliant



### Triple Bagger Grass Collection System 31211

- Works with 72" (183 cm) side discharge deck only.
- Requires rear attachment bracket, part number 130-8716

### High Lift Collection for GM360 4WD Non-Cab Models

- Capacity: 1.3 cubic yards (1 cubic meter)
- Dump height 7.4 feet (2.3 meters)
- Available for Kubota® and Yanmar®-powered models



### BOSS® De-icer Spreader Model TGS 300

- Requires Rear Attachment Bracket (130-8716) and Boss Slide-In 2" Hitch Kit (TGS11321) and Mounting Receiver (TGS0493)
- Capacity: 3 cubic feet (.085 cubic meters), 200 lbs. (91 kg)



### Pro Force® Debris Blower 44547

- Only fits Groundsmaster 360 4WD
- Driven from PTO shaft off engine
- Fits on front QAS (30509)
- Nozzle Rotation – 245°
- Great visibility – out front of machine
- Adjust height from 4.5 to 8.5 (11.4 to 22 cm) inches off ground



### AERA-Vator-First Products

- Uses front QAS (30509) & PTO hookup
- One frame, four shafts:
- AERA-Vator (aeration)
- Multi-Tine (decompacts synthetic turf)
- Aera-Slicer (verticutting)



The Toro® GDC System uses innovative technology to provide an irrigation solution to customers who want a safe, reliable and energy efficient system. Using a two-wire path to communicate to buried control units, the system eliminates the costs associated with traditional valve wire bundles and provides a solution that is vandal resistant, easy to install and easy to expand.

## **Lower Costs With Flexible Configurations**

GDC Systems can be configured with the decoders located in valve boxes outside of the playing area for easy access and lower cost, or with the decoder integrated with the sprinkler to reduce wire and splices.

## **Less System Downtime With Integrated Surge Protection (ISP)**

ISP decoders are rated at 20 KV surge protection—the highest in the industry. In some of the most active lightning areas of the world, the GDC provides rock-solid performance.

## **Easily Expandable Up To 6400 Stations**

Whether you have 100, 800 or 6400 stations, the GDC system will meet your needs and can be expanded by simply adding decoders.

## **Station-based Flow Management**

Reduces nighttime water window and optimizes pump efficiency. Central irrigation programs are available from the hand held radio for manual watering.

## **Diagnostics**

Built-in diagnostics automatically let you know if there are any problems. The wire path check quickly confirms that the whole system is operational.

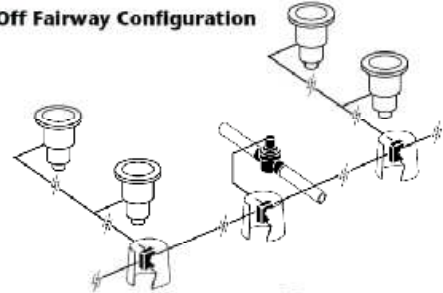


## **Integrated Sprinkler**

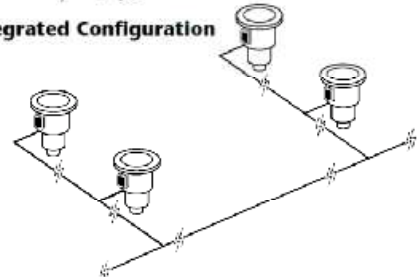
Toro valve-in-head sprinkler with integrated decoder.



**Off Fairway Configuration**



**Integrated Configuration**



Because of their superior surge protection, **Toro's GDC requires less grounding than our major competitor.** Only one ground point every 1000 feet, and Toro does not require an additional shielding wire. Integrated heads and individual or multi pack decoders can be installed on the same wire run. Toro also has lower parts replacement costs.

Thinking about decoder or integrated control? Contact your Grassland Golf Irrigation Specialist for more information.

**Toro has a better solution**

## **Ticonderoga Golf Course - Upgrades to Toro GDC 2-Wire Control**



Ticonderoga Golf Club is in the process of upgrading their back 9 holes. The project includes installation of new Toro Flex800 heads and replacing the old Heron Irrigation 24v-AC control with a new Toro 2-Wire GDC system. The new system allows for flexibility during construction with the possibility of expansion down the road. The irrigation control is provided by GDC stand-alone gateway. The exiting solenoids at the sprinkler heads were converted from AC to DC to be compatible with the Gateway. The work is being completed by Mountain-side Development located in Killington, VT.







Carl and Jim of Erie Community College North Campus check out their new Toro Workman GTX



Carlos Gaston of Albany Municipal Housing with a pre-owned GM360 with snowblower one day before 20 inches of snow



Gary, Frank and Barry are all smiles at Rosebrook Golf Course as they pose on their new Greensmaster 3150's



The crew at Niagara Falls Country Club checks out the new Groundsmaster 4700



David Hough Superintendent at Skenandoo Golf Course with his new Toro GM3500



Mark Newman from the town of Salina with a new Toro Sand Pro

**Grassland is pleased that we can now offer a good selection of Pre-Owned Toro equipment for turf professionals on a budget. These units can be offered with a factory supported warranty, and financing is available. Selection varies and changes over time. Check our website for availability. If you are in the market for quality Pre-Owned equipment contact your Grassland representative.**

**CARBETROL®**



[www.carbtrol.com](http://www.carbtrol.com)

**WATER RECYCLING SYSTEMS  
F or Closed-Loop Recycling or  
Discharge to Sewer**

Grassland Equipment & Irrigation now offers CARBTROL wash water recycling systems. Systems are available for a wide variety of washing operations including; cars, trucks, buses, and other vehicles as well as aircraft and boats. We also provide recycle systems for equipment cleaning, boat bilge water, and oily wastewaters.

- For single or multiple wash bays
- Removes oil, dirt, grime and other contaminants
- Complete system includes pressurized recycle water feed
- Zero Discharge option is available
- Systems available for all course sizes
- Removes grass, oil, pesticides, sand, and other contaminants
- Zero Discharge option is available

Carbtrol also handles chemical mix and hold & storage equipment, and above ground fuel storage for complete **Integrated Chemical Management**

For more information, contact Kirk Pogge  
518-785-5841 ext. 5111, [khpogge@grasslandcorp.com](mailto:khpogge@grasslandcorp.com)



The ALL New ACCU-Sharp 605 is the newest addition to the "Auto-Index Relief" family of automatic reel grinders for Foley United. For those who desire the "auto-index" relief system, but don't quite have the budget for our tabletop style units, this machine provides all the options you need.

Not only will the ACCU-Sharp "spin" and "relief" grind, it will do bedknives as well!





Jeff Young of Youngs Landscapes taking delivery of their Toro Fleet

## TRUE-SURFACE®

...makes true greens!



The True-Surface® Greens Care Collection is designed to make your greens care program easier on you and your budget. The True-Surface® vacuum effect will clean-up your greens with no additional labor, saving you time and money. Your greens will be ready to play as soon as you drive off!

**FAST & EASY!** Each insert can be switched out by releasing 2 retractable spring plungers - no tools needed. The hydraulic motor always remains attached to the frame. Inserts can be retrofitted on the course, no tools or technicians are needed!

The collection is designed to fit all triplex mowers and make your greens care cultural practices FAST and EASY. Since 1992, True-Surface® has had no planned obsolescence; this policy will also apply to the Greens Care Collection.

## Toro Launches Lynx® Dash to Provide Comprehensive Monitoring

Toro introduces Lynx® Dash to complement the innovative Lynx central control system. The new interactive Lynx Dash is a standalone service that can be integrated into existing Lynx central control systems or can also be used in combination with SiteVision, the Toro Turf Guard® wireless soil moisture monitoring system software.

Lynx Dash is a comprehensive dashboard that provides enhanced information to superintendents and grounds crews in an effort to make quicker decisions regarding their irrigation practices. Lynx Dash pulls in real-time weather information from a third-party weather provider and provides enhanced diagnostic information about current site conditions.



The new Lynx Dash system can be used in conjunction with Toro's Turf Guard sensors and irrigation pump stations to better monitor turf health and system performance before issues occur.

## Otterbine aerators and fountains are ideal for virtually any application!



Reducing algae and foul odors, our aerators improve your water quality and are backed by a 5-year warranty to insure that they get the job done. Whether it's the pond in your backyard, irrigation pond on a golf course or farm, detention pond in your community - anywhere you are looking to improve your water quality and perhaps create some aesthetic appeal Otterbine has a solution for you!

Otterbine is the only manufacturer of lake and pond products that goes to the extremes of having its aerating fountains, industrial aerators, fountains and lighting systems safety tested and approved as a complete package. Other manufacturers only list their components. Otterbine has the unit, cable and Power Control Center safety-tested and approved by ETL, and ETL-C, units are CE approved. This commitment to safety offers you the security of knowing that you can trust your equipment while it is running in the water.

Water quality management is a matter of pride at Otterbine Barebo. Family owned and operated, Otterbine has been leading the world in pond and lake management for more than 50 years. Their goal is to continue to develop the most natural, energy-efficient, versatile, technologically advanced and easy-to-use methods of treating water quality problems. Their approach is scientific, and their team of dedicated engineers continually seeks to improve and refine existing products and explore new possibilities in aeration.





# Groundsmaster® 5900/5910

**NEW AND IMPROVED**

Toro announces the release of the new EPA Tier 4 Final Compliant Groundsmaster® 5900/5910 rotary mower. This improved model takes the trusted design of the previous Groundsmaster 5900/5910 model and integrates a fuel-efficient Tier 4 Final compliant Yanmar® 3.3-liter turbocharged diesel engine.



“We took a hard look at key areas where we could improve an already outstanding mower, and we are excited to be able to now offer this extremely efficient and productive model,” says Kevin Conry, senior marketing manager at Toro. “The overall productivity of this machine coupled with increased fuel efficiency, simple serviceability and a continued emphasis on operator comfort are all key drivers that contributed to the new and improved Groundsmaster 5900/5910.”

The Groundsmaster 5900/5910 delivers improved horsepower efficiency through innovations to the hydraulic systems, the electric cooling system and deeper cutting decks, which reduces power usage in thick or tall cutting conditions. Because of these innovations, the upgraded Tier 4 Final models have demonstrated fuel savings of up to 30 percent when compared to the previous Groundsmaster 5900/5910 models.

The redesigned large-area mower boasts a 16-foot wide (4.9 m) cutting width, enabling an operator to mow over 100 acres (40.5 hectares) per day, making this an extremely productive mower for even the largest applications. Uptime productivity is increased through the integration of both the SmartPower™ system, which keeps the blade at optimum cutting speed regardless of turf conditions, and the SmartCool™ system that blows clippings and debris off of the intake screen to reduce overheating.

In terms of ergonomics and safety, the Groundsmaster 5900/5910 models feature a larger ControlArm™ console, which now positions all key controls at the operator's fingertips. The onboard InfoCenter™ displays clear and simple operating information at-a-glance and provides key maintenance reminders. Furthermore, the four-way adjustable seat and air-ride suspension adjust to the operator's desired firmness to maximize comfort. The entire operator platform is isolation-mounted to reduce noise and vibration. Additionally, a factory-installed all season cab model provides the operator with a safe and climate-controlled environment equipped with a number of features including a low-profile roof, rollover protection system (ROPS) and an air filtration system that minimizes operator exposure to dust and debris.

Greece Central School's new Toro Groundsmaster 5910 heading out for first mow.  
Greece CSD now has three 5910's.



Grassland Equipment & Irrigation Corp.  
892 Troy Schenectady Road  
Latham, New York 12110  
Phone: 518-785-5841  
Fax: 518-785-5740

PRESORT STD.  
U.S. POSTAGE  
PAID  
ALBANY, N.Y.  
PERMIT # 1097

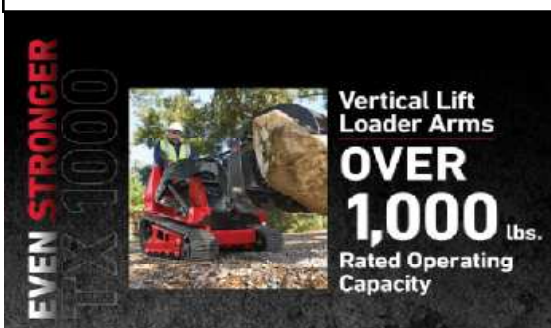


Jim McCullen from Moonlight Horticulture takes delivery of his new TX1000 Dingo



JM Austin Enterprises LLC picking up their new Toro Siteworks 427 Wide Track

## Toro ® Dingo® TX 1000



The newest member of the Dingo family has a rated operating capacity exceeding 1,000-lb, which is the strongest in the category. When the loader arms are fully-extended, the hinge pin measures an impressive 81 inches from the ground to allow the TX 1000 to easily reach over the side of dumpsters and one-ton trucks to maximize jobsite productivity. Also unique to the industry in the category is the vertical lift loader arm design, which keeps the load closer to the machine to allow operators to lift more weight with greater confidence. Additionally, this feature increases the reach at full height to make dumping more efficient. The vertical path of the lift arms is also exceptional in vertical applications with the auger or concrete breaker. Another exclusive feature on the new TX 1000 is the weight-to-power ratio. The narrow track model is 2,610-lbs (1,184 kg), and wide-track is 2,790 lbs (1,266 kg) and can lift more than any CUL in the category.

Other operator-centric features have been engineered into the new TX 1000, including thigh and hip padding on the operator station for a comfortable experience and an auxiliary foot control integrated into the suspended platform which frees the operator's hands to focus on ground speed and attachment positioning.

In terms of productivity, the Kubota® 1305 liquid-cooled, diesel engine boasts an impressive 24 gross hp at 2,600 rpm with increased displacement and high torque – giving the TX 1000 maximum power. The machine also is equipped with dual fuel tanks to reduce downtime in the field. Other time-saving features include an easily accessible engine for routine maintenance tasks, belt-free design to minimize maintenance, and ground speeds of 4.7 mph in both forward and reverse to maximize productivity. With nine different models – from wheeled, tracked, gas or diesel, and now the all-new Dingo TX 1000 – Toro offers the strongest compact utility loader lineup in the industry. Customers can continue to count on a Toro Dingo to get their work done with a powerful, reliable, and easy-to-use lineup.